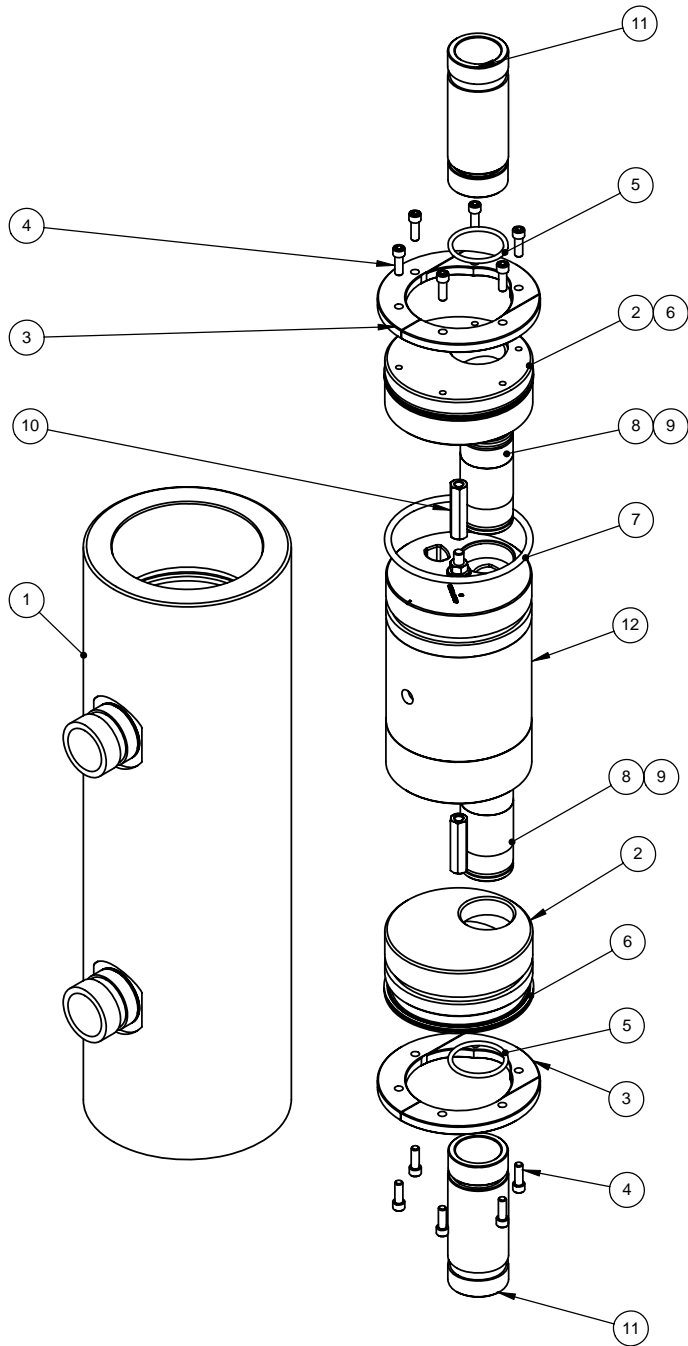


Tuesday, February 27, 2007 2:25:26 PM - X:\Engineering\Fred\My PDM\Works Workgroup Documents\40022



BILL OF MATERIALS				
ITEM NO.	QTY.	PART NO.	DESCRIPTION	MATERIAL
1	1	41068-01	VESSEL, PRESSURE	FIBERGLASS
2	2	41030-01	END CAP, 1 1/2" PORT	FIBERGLASS
3	2	41039-01	RING, LOCK	FIBERGLASS
4	12	10012-01	SHCS, 1/4-20 X 5/8" LG	316 SS
5	2	10158-01	O-RING, -223	EPDM
6	2	10192-01	RING, SEAL, QUAD, -347	EPDM
7	1	10164-01	O-RING, -347	EPDM
8	2	41070-02	NIPPLE, 1 1/4", LOW PRESSURE	TITANIUM
9	4	10152-01	O-RING, -127	EPDM
10	2	41071-01	STANDOFF, HEX	TITANIUM
11	2	41092-01	PORT, END, 1 1/2", IC CASTING	CN3MN
12	1	41116-01	ASSY, INTERNALS, PX-30	---

PART NUMBER	DESCRIPTION
40022-01	PX-30 PRESSURE EXCHANGER


[METRIC]
INCH

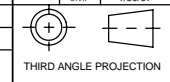
UNLESS OTHERWISE SPECIFIED:
TOLERANCES: (IN INCHES)
FRACTIONAL: $\pm 1/32"$
ANGULAR: MACH $\pm 5^\circ$
BEND $\pm 1^\circ$
TWO PLACE DECIMAL: $\pm 0.01"$
THREE PLACE DECIMAL: $\pm 0.005"$
FOUR PLACE DECIMAL: $\pm 0.0002"$
SURFACE FINISH:
ON PART 125 RMS
ON O-RING SURFACES 32 RMS
DIMENSIONING AND TOLERANCING PER ANSI
Y14.5M (LATEST)
FINISH:
MATERIAL:
SHOWN

PROPRIETARY AND CONFIDENTIAL
THE INFORMATION CONTAINED IN THIS DRAWING IS THE SOLE PROPERTY OF ENERGY RECOVERY INC. ANY REPRODUCTION IN PART OR AS A WHOLE WITHOUT THE WRITTEN PERMISSION OF ENERGY RECOVERY INC. IS PROHIBITED.

PRODUCT
DRAWING STATUS

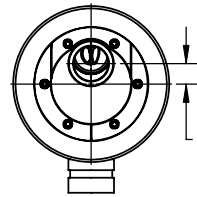
© 2008, ENERGY RECOVERY, INC.

0	07-002	INITIAL DRAWING RELEASE	FTM	1/19/07
REV.	ECN NO.	DESCRIPTION	BY	DATE
REVISIONS				
		ENERGY RECOVERY INC.		
		1908 Doolittle Drive, San Leandro, CA 94577 Ph. (510)483-7370 / Fax: (510)483-7371 www.energyrecovery.com		
DRAWN	FTM	1/18/07	TITLE:	
CHECKED	JGM	1/30/07	ASSY, S SERIES, 4S SINGLE, PX-30	
ENG APPR	JMP	1/30/07	SIZE	REV
		C		0
		SCALE: 1:8		WEIGHT:
				SHEET 1 OF 3

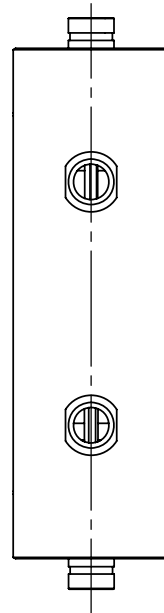


- NOTES:
 1. SHIM AS REQUIRED BETWEEN HOUSING AND MOUNTING SURFACE.
 2. HOUSING MUST BE SUPPORTED INDEPENDENTLY OF PIPING. REFER TO OPERATIONS AND MAINTENANCE MANUAL.
 3. ASSEMBLY DRY WEIGHT: 46 LBS. (20.9 KGS).
 4. ALL CONNECTIONS ARE FLEXIBLE TYPE.
 5. DO NOT USE INLET/OUTLET PORTS FOR LIFTING.
 6. ENERGY RECOVERY, INC. RESERVES THE RIGHT TO MAKE SPECIFICATION OR DIMENSION CHANGES AT ANY TIME WITHOUT PRIOR NOTICE.

**DO NOT USE
 INLET/OUTLET PORTS
 FOR LIFTING**



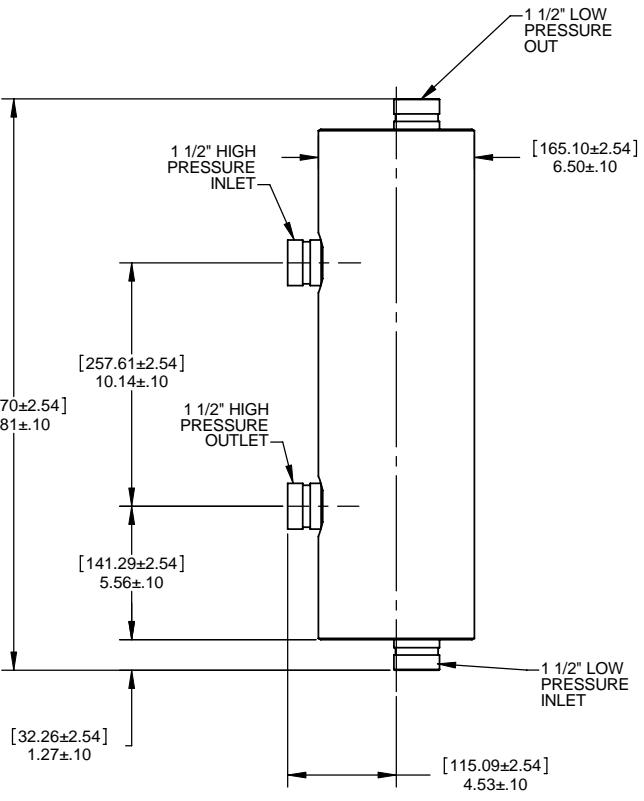
[21.59±2.54]
 .85±.10



[604.70±2.54]
 23.81±.10

[257.61±2.54]
 10.14±.10

[141.29±2.54]
 5.56±.10



1 1/2" LOW
 PRESSURE
 OUT

1 1/2" HIGH
 PRESSURE
 INLET

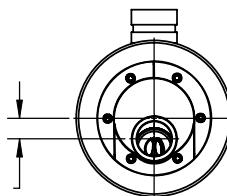
[165.10±2.54]
 6.50±.10

1 1/2" HIGH
 PRESSURE
 OUTLET

1 1/2" LOW
 PRESSURE
 INLET

[32.26±2.54]
 1.27±.10

[115.09±2.54]
 4.53±.10



[21.59±2.54]
 .85±.10

**[METRIC]
 INCH**

UNLESS OTHERWISE SPECIFIED:
 TOLERANCES: (IN INCHES)

FRACTIONAL: ± 1/32"
 ANGULAR: MACH ± 5°
 BEND ± 1°
 TWO PLACE DECIMAL: ± .01"
 THREE PLACE DECIMAL: ± .005"
 FOUR PLACE DECIMAL: ± .0002"
 SURFACE FINISH:
 ON PART 125 RMS
 ON O-RING SURFACES 32 RMS

DIMENSIONING AND TOLERANCING PER ANSI
 Y14.5M (LATEST)

FINISH:
 MATERIAL:
 SHOWN



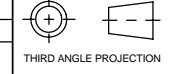
ENERGY RECOVERY INC.

1908 Doolittle Drive, San Leandro, CA 94577
 Ph. (510)483-7370 / Fax: (510)483-7371
 www.energyrecovery.com

DRAWN	FTM	1/18/07
CHECKED	JGM	1/30/07
ENG APPR	JMP	1/30/07

TITLE:
**ASSY, S SERIES,
 4S SINGLE, PX-30**

SIZE DWG. NO. REV
C 40022 0



THIRD ANGLE PROJECTION

SCALE: 1:4 WEIGHT: SHEET 2 OF 3

PROPRIETARY AND CONFIDENTIAL

THE INFORMATION CONTAINED IN THIS DRAWING IS THE SOLE PROPERTY OF ENERGY RECOVERY INC. ANY REPRODUCTION IN PART OR AS A WHOLE WITHOUT THE WRITTEN PERMISSION OF ENERGY RECOVERY INC. IS PROHIBITED.

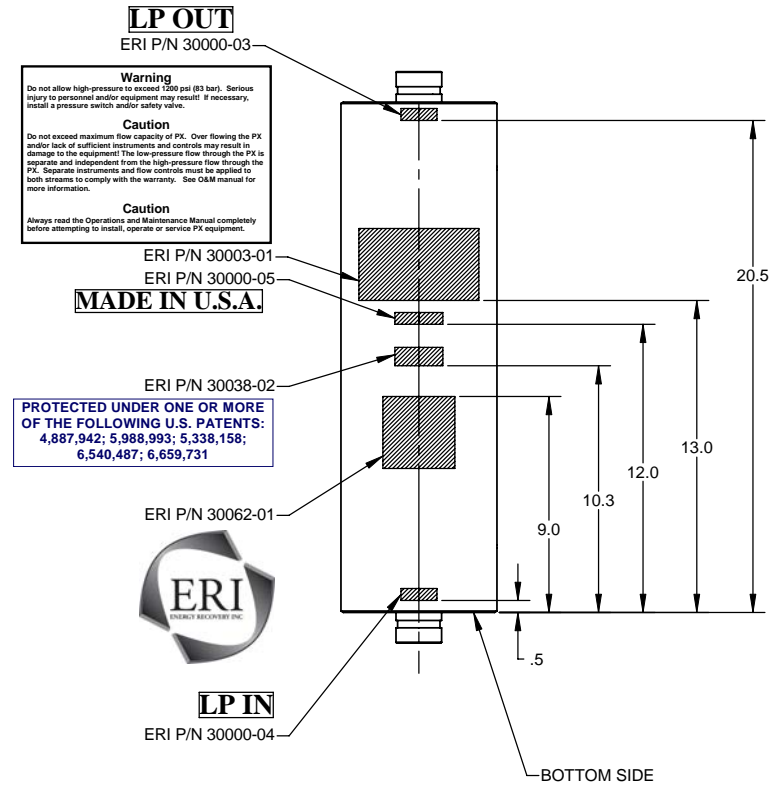
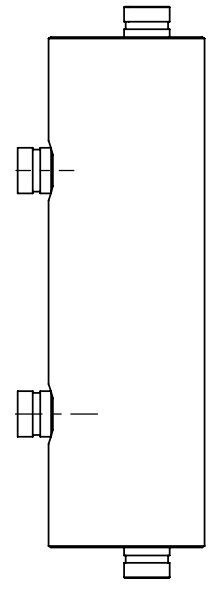
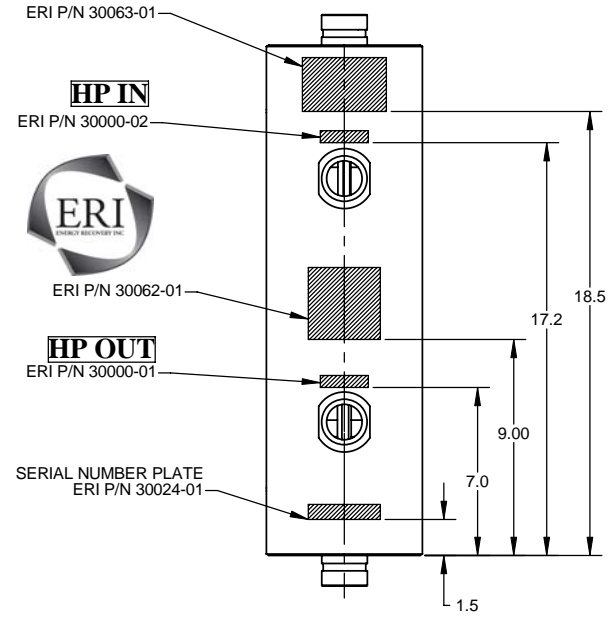
PRODUCT

DRAWING STATUS

© 2008 , ENERGY RECOVERY, INC.

Tuesday, February 27, 2007 2:25:26 PM - X:\Engineering\Fred\IE\My PDM\Works Workgroup Documents\400022

Energy Recovery, Inc
Model PX-30
Pressure Exchanger
 Capacity: 20-30 gpm (4.5-6.8 m³/hr)
 Maximum Pressure: 1200 psi (82.7 bar)
 Do not mix PX models on same manifold
 Gasoline and petroleum damage will result



Warning
 Do not allow high-pressure to exceed 1200 psi (83 bar). Serious injury to personnel and/or equipment may result! If necessary, install a pressure switch and/or safety valve.

Caution
 Do not exceed maximum flow capacity of PX. Over flowing the PX and/or lack of sufficient instruments and controls may result in damage to the equipment. The low-pressure flow through the PX is separate and independent from the high-pressure flow through the PX. Separate instruments and flow controls must be applied to both streams to comply with the warranty. See O&M manual for more information.

Caution
 Always read the Operators and Maintenance Manual completely before attempting to install, operate or service PX equipment.

PROTECTED UNDER ONE OR MORE OF THE FOLLOWING U.S. PATENTS:
 4,887,942; 5,988,993; 5,338,158;
 6,540,487; 6,659,731

ITEM NO	QTY	PART NUMBER	DESCRIPTION	MATERIAL
1	1	30063-01	LABEL, "PX-30"	--
2	1	30000-01	LABEL, "HP OUT"	--
3	1	30000-02	LABEL, "HP IN"	--
4	1	30000-03	LABEL, "LP OUT"	--
5	1	30000-04	LABEL, "LP IN"	--
6	1	30000-05	LABEL, "MADE IN U.S.A."	--
7	1	30003-01	LABEL, "WARNING"	--
8	1	30024-01	LABEL, "SERIAL NUMBER"	ALUM
9	1	30038-02	LABEL, "PATENT"	--
10	2	30062-01	LABEL, ERI LOGO	--

INCH

UNLESS OTHERWISE SPECIFIED:
 TOLERANCES:
 FRACTIONAL: ± 1/32"
 ANGULAR: MACH ± 5°
 BEND ± 1°
 TWO PLACE DECIMAL: ± 0.01"
 THREE PLACE DECIMAL: ± 0.005"
 FOUR PLACE DECIMAL: ± 0.0002"
 SURFACE FINISH:
 ON PART 125 RMS
 ON O-RING SURFACES 32 RMS
 DIMENSIONING AND TOLERANCING PER ANSI Y14.5M (LATEST)
 FINISH:
 MATERIAL:
 SHOWN



ENERGY RECOVERY INC.
 1908 Doolittle Drive, San Leandro, CA 94577
 Ph. (510)483-7370 / Fax: (510)483-7371
 www.energyrecovery.com

DRAWN	FTM	1/18/07
CHECKED	JGM	1/30/07
ENG APPR	JMP	1/30/07

TITLE: ASSY, S SERIES, 4S SINGLE, PX-30		
SIZE	DWG. NO.	REV
C	40022	0
SCALE: 1:8	WEIGHT:	SHEET 3 OF 3

PROPRIETARY AND CONFIDENTIAL
 THE INFORMATION CONTAINED IN THIS DRAWING IS THE SOLE PROPERTY OF ENERGY RECOVERY INC. ANY REPRODUCTION IN PART OR AS A WHOLE WITHOUT THE WRITTEN PERMISSION OF ENERGY RECOVERY INC. IS PROHIBITED.

PRODUCT
 DRAWING STATUS

© 2008, ENERGY RECOVERY, INC.

Tuesday, February 27, 2007 2:25:26 PM - X:\Engineering\Fred\ie\My PDMWorks Workgroup Documents\400022