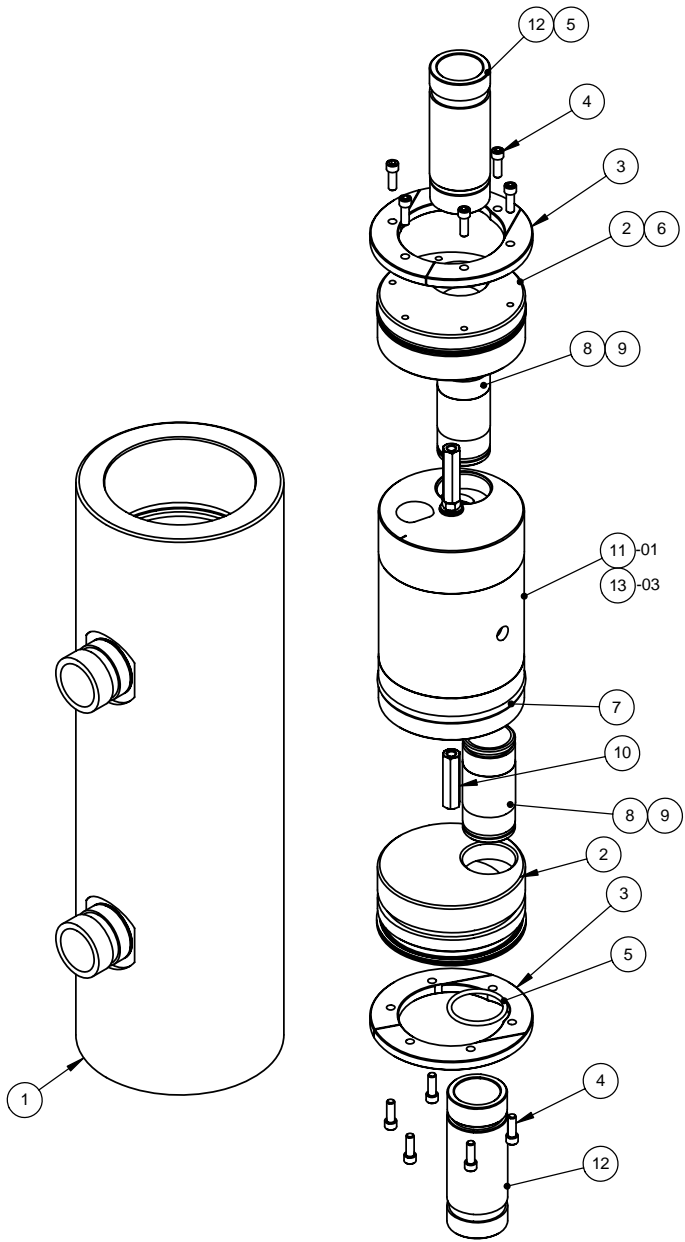


Thursday, December 28, 2006 1:38:53 PM X:\Engineering\Drawings, Production\Avc 5-29-07\40000 PX product assemblies\40011



BILL OF MATERIALS					
ITEM NO.	-01/QTY.	-03/QTY.	PART NO.	DESCRIPTION	MATERIAL
1	1	1	41068-01	VESSEL, PRESSURE	FIBERGLASS
2	2	2	41030-01	END CAP, 1 1/2" PORT	FIBERGLASS
3	2	2	41039-01	RING, LOCK	FIBERGLASS
4	12	12	10012-01	SHCS, 1/4-20 X 5/8" LG	316 SS
5	2	2	10158-01	O-RING, -223	EPDM
6	2	2	10192-01	RING, SEAL, QUAD, -347	EPDM
7	1	1	10164-01	O-RING, -347	EPDM
8	2	2	41070-02	NIPPLE, 1 1/4", LOW PRESSURE	TITANIUM
9	4	4	10152-01	O-RING, -127	EPDM
10	2	2	41071-01	STANDOFF, HEX	TITANIUM
11	1	-	41097-01	CARTRIDGE, INTERNAL, PX-70S	---
12	2	2	41092-01	PORT, END, 1 1/2", IC CASTING	AL6XN
13	-	1	41098-01	CARTRIDGE, INTERNAL, PX-45S	---


PART NUMBER	DESCRIPTION
40011-01	PX-70S PRESSURE EXCHANGER
40011-03	PX-45S PRESSURE EXCHANGER

INCH

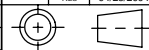
UNLESS OTHERWISE SPECIFIED:
 TOLERANCES:
 FRACTIONAL: ± 1/32"
 ANGULAR: MACH ± 5°
 BEND ± 1°
 TWO PLACE DECIMAL: ± 0.01"
 THREE PLACE DECIMAL: ± 0.005"
 FOUR PLACE DECIMAL: ± 0.0002"
 SURFACE FINISH:
 ON PART 125 RMS
 ON O-RING SURFACES 32 RMS
 DIMENSIONING AND TOLERANCING PER ANSI Y14.5M (LATEST)
 FINISH:
 MATERIAL:
 SHOWN

3	05-068	CHANGED TO IC PORTS	JGM	10/31/2005
2	04-113	ADDED RIBBED ROTOR	RLS	12/17/2004
1	04-043	ADD -03 / CHG PORT ORIENTATIONS	RAC	06/16/2004
REV.	ECN NO.	DESCRIPTION	BY	DATE

REVISIONS



ENERGY RECOVERY INC.
 1908 Doolittle Drive, San Leandro, CA 94577
 Ph. (510)483-7370 / Fax: (510)483-7371
 www.energyrecovery.com

DRAWN	RAC	04/05/2004	TITLE:
CHECKED	TLR	04/28/2004	ASSY, S SERIES, 4" SINGLE ROTOR
ENG APPR	RLS	04/28/2004	SIZE DWG. NO. REV
 <p>THIRD ANGLE PROJECTION</p>			C 40011 3
SCALE: 1:8			WEIGHT: SHEET 1 OF 2

PROPRIETARY AND CONFIDENTIAL
 THE INFORMATION CONTAINED IN THIS DRAWING IS THE SOLE PROPERTY OF ENERGY RECOVERY INC. ANY REPRODUCTION IN PART OR AS A WHOLE WITHOUT THE WRITTEN PERMISSION OF ENERGY RECOVERY INC. IS PROHIBITED.

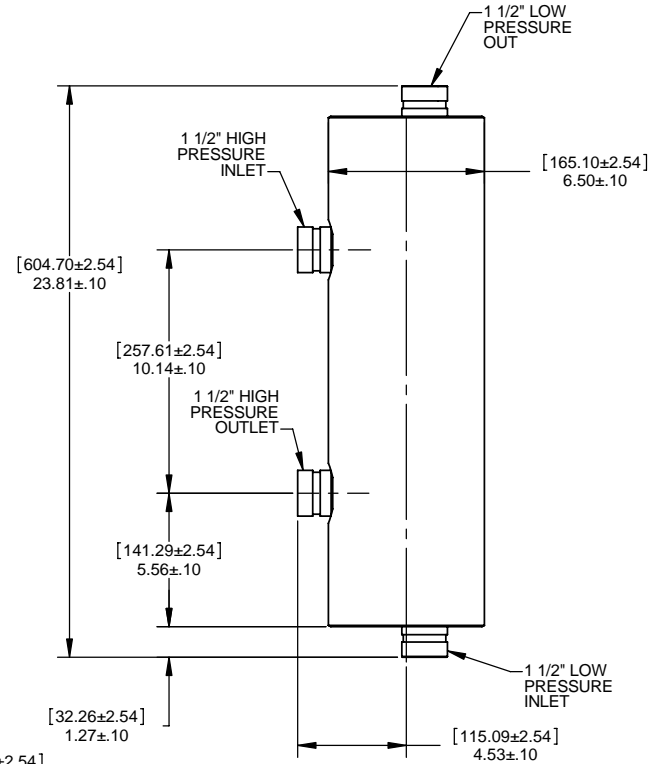
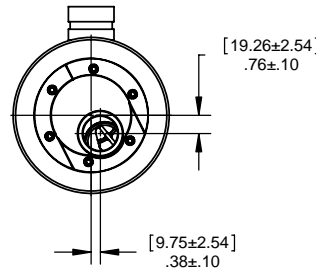
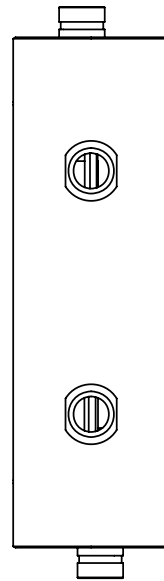
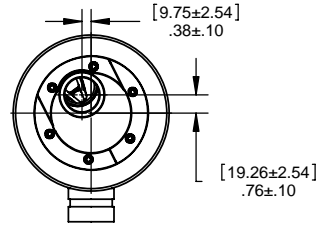
PRODUCT

DRAWING STATUS

© 2007, ENERGY RECOVERY, INC.

- NOTES:
 1. SHIM AS REQUIRED BETWEEN VESSEL AND MOUNTING SURFACE.
 2. VESSEL MUST BE INDEPENDENTLY SUPPORTED. REFER TO OPERATIONS AND MAINTENANCE MANUAL.
 3. VESSEL DRY WEIGHT: 46 LBS. (20.9 KGS).
 4. ALL VESSEL CONNECTIONS ARE FLEXIBLE TYPE.
 5. DO NOT USE INLET/OUTLET PORTS FOR LIFTING.
 6. ENERGY RECOVERY, INC. RESERVES THE RIGHT TO MAKE SPECIFICATION OR DIMENSION CHANGES AT ANY TIME WITHOUT PRIOR NOTICE.

**DO NOT USE
 INLET/OUTLET PORTS
 FOR LIFTING**



SEE SHEET 1 FOR REVISIONS



ENERGY RECOVERY INC.

1908 Doolittle Drive, San Leandro, CA 94577
 Ph. (510)483-7370 / Fax: (510)483-7371
 www.energyrecovery.com

INCH

PROPRIETARY AND CONFIDENTIAL

THE INFORMATION CONTAINED IN THIS DRAWING IS THE SOLE PROPERTY OF ENERGY RECOVERY INC. ANY REPRODUCTION IN PART OR AS A WHOLE WITHOUT THE WRITTEN PERMISSION OF ENERGY RECOVERY INC. IS PROHIBITED.

PRODUCT

DRAWING STATUS

© 2007, ENERGY RECOVERY, INC.

DRAWN	RAC	04/05/2004
CHECKED	TLS	04/28/2004
ENG APPR	RLS	04/28/2004

THIRD ANGLE PROJECTION

TITLE:
**ASSY, S SERIES,
 4" SINGLE ROTOR**

SIZE	DWG. NO.	REV
C	40011	3
SCALE: 1:4	WEIGHT:	SHEET 2 OF 2

Thursday, December 28, 2006 1:38:53 PM \\X:\Engineering\Drawings, Production\Avc 5:29:07\40000 PX product assemblies\40011